

IP CAMERA DAY/NIGHT ZOOM 18X GGM CAMF25Z



POE



ZOOM
X18



FUNCTION
DAY / NIGHT



SENSOR
CCD

802.3 af compliant (PoE)

Optical zoom 18x

Day / Night function

Progressive-scan CCD
sensor

Dual Stream
MPEG-4/MJPEG

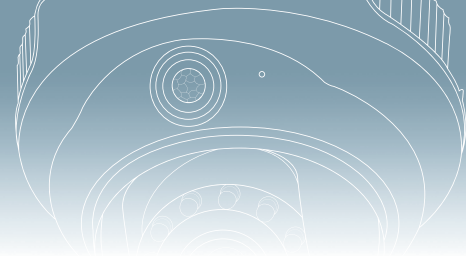
The GGM CAMF25Z, incorporates a fully integrated Sony 18x optical zoom lens and progressive scan CCD sensor, is an all-in-one network camera for 24 hour day and night surveillance. With the built-in 18x optical zoom, this camera can flexibly zoom in on small or distant objects and remotely monitor warehouses, construction sites, parking lots, office or apartment buildings and more - with exceptional accuracy and clarity.

Featuring the day/night function, the IR-cut filter is able to be removed while lighting darkens and automatically turns the mode of color (day time/bright lighting) into monochrome (night time/dark or low lighting), down to 0.38 lux. It also comes with a RS-485 interface for scanners or pan/tilts driver connection, which is designed for a cost-effective alternative with pan/tilt/zoom functions as a professional speed dome.

Additionally, this camera is fully loaded with many sophisticated features such as 3GPP mobile surveillance, Power over Ethernet, and SIP two-way audio, free-bundled 16-Ch recording software etc., allowing you to build up a reliable, future-proof IP surveillance system with ease. No matter how wide range your applications would be, just have a closer, crystal clear view with VIVOTEK IZ7151 from anywhere over the network.

PRODUCT FEATURES

- PoE
- VGA resolution at 30 fps
- Progressive-scan CCD sensor
- Dual streaming MPEG-4 MJPEG simultaneously

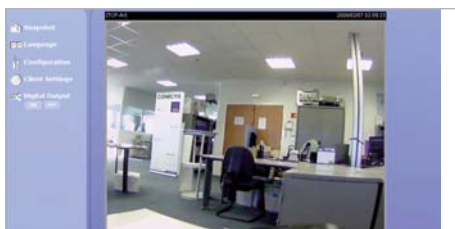


PRODUCT SPECIFICATION

SYSTEM	
CPU	WTK-1000 SoC
Flash	8MB
RAM	64MB
Embedded OS	Linux 2.4
PAN/TILT/ZOOM	
	18x optical zoom
LENS	
Focal length	f=4.1 ~ 73.8 mm, auto iris, focus range 290 mm (wide), 800 mm (tele) to infinity
F-number	F1.4 (wide), F3.0 (tele) Embedded removable IR-cut filter for day & night function
ANGLE OF VIEW	
	Horizontal 2.8° ~ 48°
SHUTTER TIME	
	1/2 sec. to 1/10000 sec
IMAGE SENSOR	
	SONY 1/4" progressive scan CCD sensor in VGA resolution
MINIMUM ILLUMINATION	
	1.61 Lux (F1.4, 1/30s) 0.38 Lux (F1.4, 1/30s, without IR-cut filter)
VIDEO	
Compression	MJPEG & MPEG-4
Streaming	Simultaneous dual-streaming MPEG-4 streaming over UDP, TCP, or HTTP MPEG-4 multicast streaming MJPEG streaming over HTTP Supports 3GPP mobile surveillance
Frame rates	MPEG-4 : Up to 30/25 fps at 640x480 MJPEG : Up to 30/25 fps at 640x480

IMAGE SETTINGS	
	Adjustable image size, quality, and bit rate Time stamp and text caption overlay Flip & mirror Configurable white balance, brightness, sharpness, and exposure Automatic, manual or scheduled day/night mode Backlight compensation (BLC)
AUDIO	
Compression	GSM-AMR speech compression, bit rate : 4.75 kbps ~12.2 kbps MPEG-4 AAC audio encoding, bit rate : 16 kbps ~128 kbps
Interface	Built-in microphone External microphone input Supports two-way audio via SIP protocol Supports audio mute
NETWORKING	
	10/100 Mbps Ethernet, RJ-45
Protocols	IPv4, TCP/IP, HTTP, UPnP, RTSP/RTP/RTCP, IGMP, SMTP, FTP, DHCP, NTP, DNS, DDNS, and PPPoE
ALARM AND EVENT MANAGEMENT	
	Triple-window video for motion detection One D/I and one D/O for external sensor and alarm Event notification using HTTP, SMTP, or FTP Local recording of MP4 file
SECURITY	
	Multi-level user access with password protection IP address filtering
USERS	
	Camera live viewing for up to 10 clients
DIMENSIONS	
	147 mm (D) x 78 mm (W) x 85 mm (H)
WEIGHT	
	Net 824 g

LED INDICATOR	
	System power and status indicator System activity and network link indicator
POWER	
	12V DC 24V AC Power consumption : Max. 7.6W 802.3af compliant Power-over-Ethernet
APPROVALS	
	CE, LVD, FCC, VCCI, C-Tick
OPERATING ENVIRONMENTS	
Temperature	0 ~ 50 °C (32 ~ 122 °F)
Humidity	20%~80% RH)
VIEWING SYSTEM REQUIREMENTS	
OS	Microsoft Windows 2000/XP/Vista
Browser	Mozilla Firefox, Internet Explorer 6.x or above
Cell phone	3GPP player
Real Player	10.5 or above
Quick Time	6.5 or above
INSTALLATION, MANAGEMENT AND MAINTENANCE	
	Installation Wizard 2 Supports firmware upgrade
COMPATIBILITY	
	GGM NVR4250G, GGM NVR8500G, GGM NVR16CAM, GGM NVR20CAM, GGM NVR40CAM GGM SOFTIPxx AIMETIS SOFTWARE
APPLICATIONS	
	SDK available for application development and system integration
WARRANTY	
	24 months



VOTRE INTERLOCUTEUR CONSEIL

