

IP VIDEO RECORDER 4 WAY GGM NVR4250G2



UP TO
4 IP CAMERAS



AVI

FORMAT
VIDEO



USE
LOCAL AND
REMOTE



GETTING STARTED
EASY



ENERGY
SAVING

The network video recorder **GGM NVR4250G2** provides comprehensive monitoring solution for identifying theft, enhance security staff and control remote infrastructure. The system is ideal for monitoring businesses, shops, hotels ... asking an actual video surveillance professional.

Easy to install and use, the **GGM NVR4250G2** is a complete recording solution that can connect directly to networks and controlled remotely via a local network or directly by Internet. It offers the possibility of recording and remote access along with live images or recorded video from a maximum 4 GIGAMEDIA IP cameras.

The recording can be scheduled or triggered by motion detection, recording speed of up to 200 frames per second in VGA. The ability to 1TB of storage built to store eg 7 days recording in VGA 24h/24 at a frequency of 25 frames / s to 4 IP cameras.

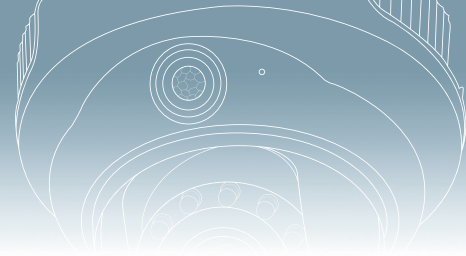
CALCULATING THE CAPACITY FOR STORING YOUR NVR*

Available on www.conectis.com interface "PROJECT PLANNER" to calculate the required storage capacity to your recorder according to the number and type of cameras used.



PRODUCT FEATURES

- 1 Hard Drive 1 TB built (SATA + 1 slot)
- High quality video recording MPEG4 / MJPEG / H.264
- Recording on Motion Detection, Continuous, Scheduled and alarm
- Viewing videos 1/4/8 and "Picture-in-Picture"
- Recording, viewing and playback of local video and remote access.
- Taking Pictures
- Sending email on system problem
- Video replay simplified and fast
- Adjusting the length of recorded video (1min to 99min)
- Supports Raid 0 and Raid 1
- 1 Gigabit Ethernet LAN
- Resolution of video recording: 4CIF Megapixel and to validate different types of cameras (see Project Planner *)
- Auto-restart if power failure
- Supports with an inverter
- 3 USB ports for fast backup of video, additional storage and inverter
- Logs detailed events
- Management of user rights (administrator, guest ...)
- SMB Server (Samba)
- FTP server
- Embedded Web server
- Supports up to 4 IP cameras simultaneously in 4CIF @ 25fps (not megapixel)
- Intelligent search in recorded video
- Watermarking (anti-tampering videos)



PRODUCT SPECIFICATION

HARDWARE

Processor	Marvell 1.2GHz
RAM	256MB DDRII
Bandwidth	28Mbps

VIDEO

Display Mode	1, 4 "Picture-inPicture" and Sequential
Number of camera	4 cameras
	Up to 120 channels of visualization interface
	Compatible with entire range of GIGAMEDIA cameras except GGM CAMS05
	MPEG-4 / MJPEG / H.264
	Resolution video configuration, quality, number of frames per second

REGISTRATION

Recording modes Continuous, manual, scheduled, alarm, detection, photo
 Pre-record buffer = 300sec,
 Post registration = 300sec
 To validate resolutions for different types of cameras (See project planner: <http://showroom.conectis.com/>)
 AVI video format
 Audio recording if cameras support this function

READING

Mode of Play, Pause, Stop, Fast Forward, Full Screen
 Based watermarking for video certification
 Search Engine Date and Time
 Reading by reader integrated visualization, files compatible "Media Player"
 Download videos recorded by local and remote access
 To validate resolutions for different types of cameras (See project planner: <http://showroom.conectis.com/>)
 Intelligent search movement detection, foreign object / disappeared, loss of focus, camera occlusion

STORAGE

Linear storage mode, Raid 0, Raid 1, JBOD
 Up to 4TB capacity
 Services Web server HTTP, FTP, SMB / CIFS

LANGUAGES

Supported Languages English, French, Japanese, Italian, German, Spanish, Portuguese, Chinese

NETWORKS

Protocols http, TCP/IP, SMTP, DHCP, DNS, DDNS, FTP, NTP, UPnP
 Configuration Parameters IP Cameras IP LAN / WAN
 Visualization http Internet Explorer 6.0 or higher

SECURITY

Embedded Linux
 Configuring user access system and cameras
 Management system alerts E-mail, sound, Logs
 Supports APC UPS (USB)
 Logs stored in log events, errors, access
 SMS alert on events

UTILITY

Finderscans Network configuration and management for GGM NVR4250G2

EQUIPMENT

HDD	1 x 1 TB built (2 slots) (Can go up 4Tbits) 2 Gigabit Ethernet LAN (Failover) Power LED, USB, Status, LAN, HDD USB 3 USB fast backup of video, additional storage and UPS
Dimensions	165.5 (H) x 85 (W) x 218.4 (D) mm
Weight	1.9 Kg
Color	Black

ENVIRONMENT

Temperature	0-40°C
Humidity	0%-90% R.H Integrated cooling fan Protecting Notch Lock "K-LOCK"

POWER

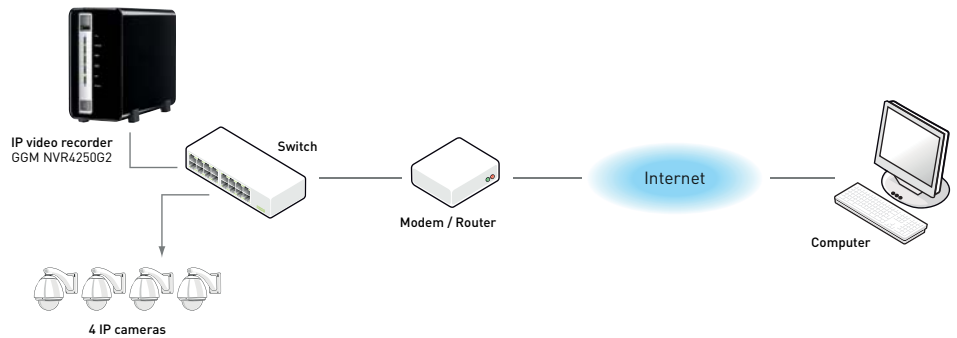
60 W adapter, 100 ~ 240 V
 12 V power product
 Consumption 13 W

CERTIFICATIONS

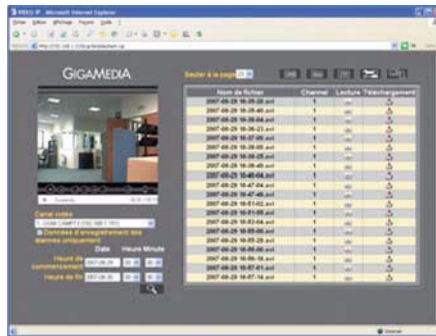
CE, FCC, VCCI, BSMI

WARRANTY

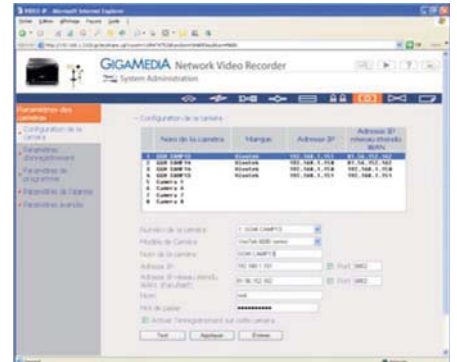
2 years manufacturer



Viewing videos



Playback of recorded video



Camera configuration